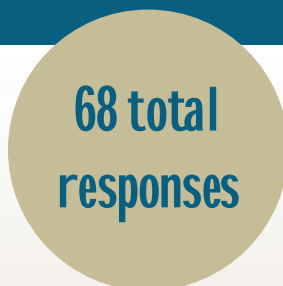


Weston Bicycle and Pedestrian Scoping Study Summary of Online Community survey

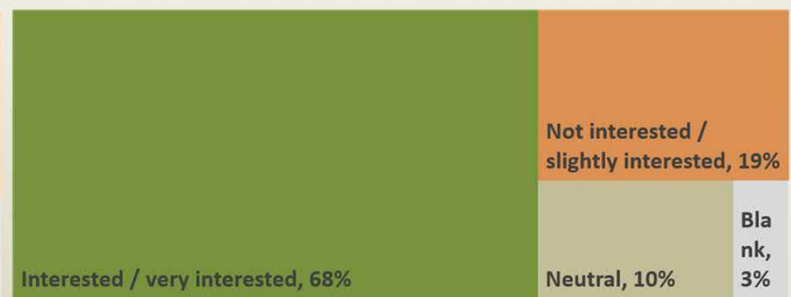


68% LIVE IN
PROJECT AREA
OR DRIVE THROUGH
PROJECT AREA DAILY

INTEREST IN NEW PEDESTRIAN INFRASTRUCTURE WITHIN THE PROJECT AREA

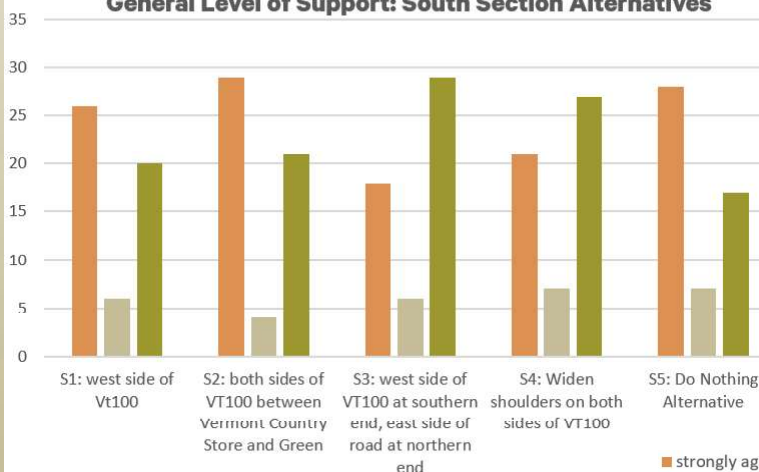


INTEREST IN NEW BIKE-FRIENDLY INFRASTRUCTURE WITHIN THE PROJECT AREA

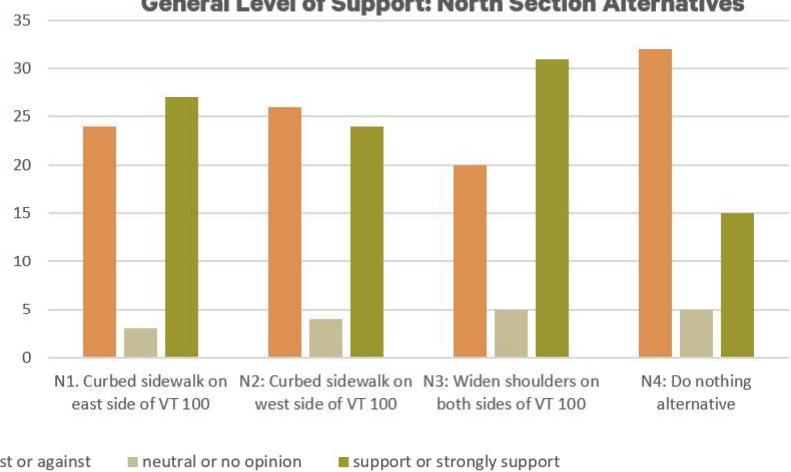


LEVEL OF SUPPORT FOR PROJECT ALTERNATIVES

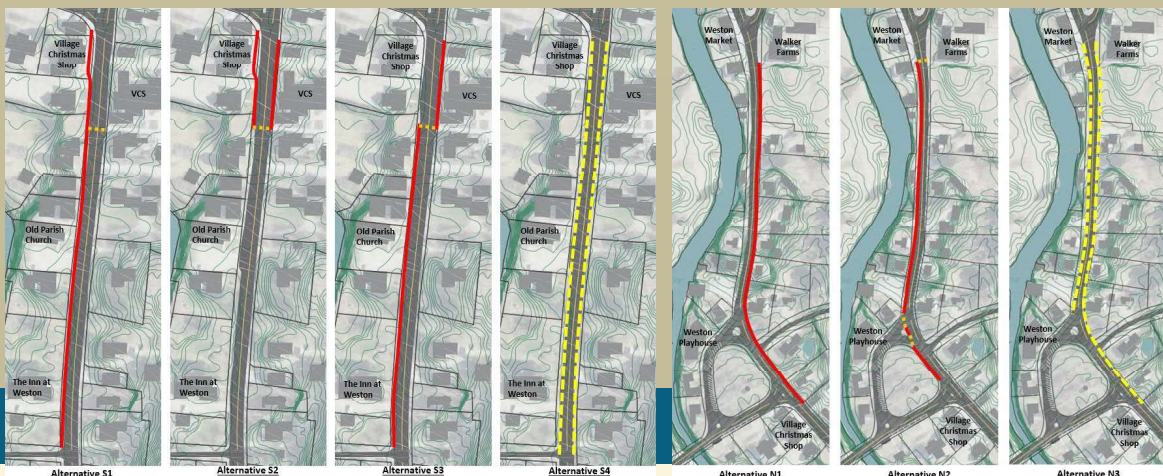
General Level of Support: South Section Alternatives



General Level of Support: North Section Alternatives



The No Build Alternative had the lowest overall support for both the north and south section alternatives.



Approximately 20% of responders did not respond to state their level of support for the various alternatives.